

GUANGZHOU SONGLITES LIGHTING CO., LTD.

Add: No.9, Dayang Road, Mingzu Village, Tanbu Town, Huadu District, Guangzhou City, China. 510820



Tel: +86-20-37294926 / 37294936 Fax: +86-20-36641423 Eml: sales01@@songlites.com

Product Description SONGLITES

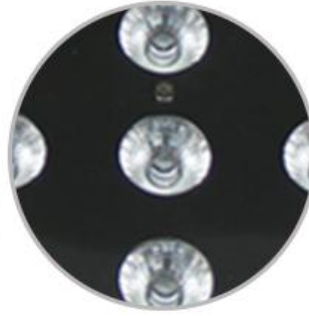


City Color 72PCS 10/12/15W 4/5/6In1 LED Wall Washer

Model No.	SL-2027B
Lamp	72 PCS 10/12/15W 4/5/6in1 LED
Power consumption	720W
Lifespan	50000 hours
Emitting color	RGBW/RGBWA/RGBWA+UV
Strobe	1-18 times/s high speed strobe effect
Mechanical dimming system	0-100% smooth linear dimming
Rainbow effect	√
Housing	Aluminum
Protection grade	IP65
Control signal	DMX 512, master-slave,voice,auto
Control channel	4/8/12CH
Net weight:	29KG
Gross weight:	65KG
Product dimension	640*560*430mm
Packing dimension	720(D)*650(W)*770(H)mm



**LED City Color
Wall Washer Light**



**72 PCS
10W/12W/15W
4in1/5in1/6in1
LEDs**



**LED Display
with 4 key
buttons**



**Waterproof
3-pin XLR
signal
connector
IN/OUT**







Contact us

Tel: +86-20-37294926/37294936

Fax: +86-20-36641423

Email: sales01@songlites.com

Mob: +86-13822192379

Website: www.songlites.com