

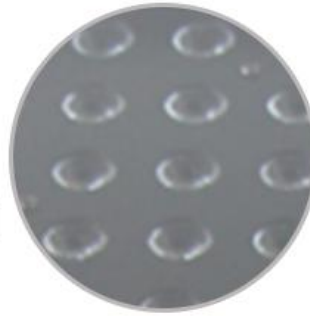
# GUANGZHOU SONGLITES LIGHTING CO., LTD.

Add: No.9, Dayang Road, Mingzu Village, Tanbu Town, Huadu District, Guangzhou City, China. 510820



## Wall Washer Light 192PCS 3W LED Outdoor

Model No.	SL-2027A
Lamp	192 PCS 3W LEDs
Power consumption	600W
Lifespan	50000 hours
Emitting color	RGBW/RGBA
Pan/Tilt rotation	Tilt angle can be adjusted
Beam angle	25°
Strobe	1-18 times/sec high-speed strobe effect
Mechanical dimming system	0-100% smooth linear dimming
Rainbow effect	√
Housing	Aluminum
Protection grade	IP65
Control signal	DMX 512, master-slave,voice,auto
Control channel	4/8/12CH
Net weight:	29KG
Gross weight:	65KG
Product dimension	640*560*430mm
Packing dimension	720(D)*650(W)*770(H)mm



**192 PCS 3W  
LEDs**



**LED display  
with 4 key  
button**



**LED CITY COLOR  
Architecture Lighting**



**Die-cast  
aluminum body  
and metal base**







## Contact us

Tel: +86-20-37294926/37294936

Fax: +86-20-36641423

Email: [sales01@songlites.com](mailto:sales01@songlites.com)

Mob: +86-13822192379

Website: [www.songlites.com](http://www.songlites.com)